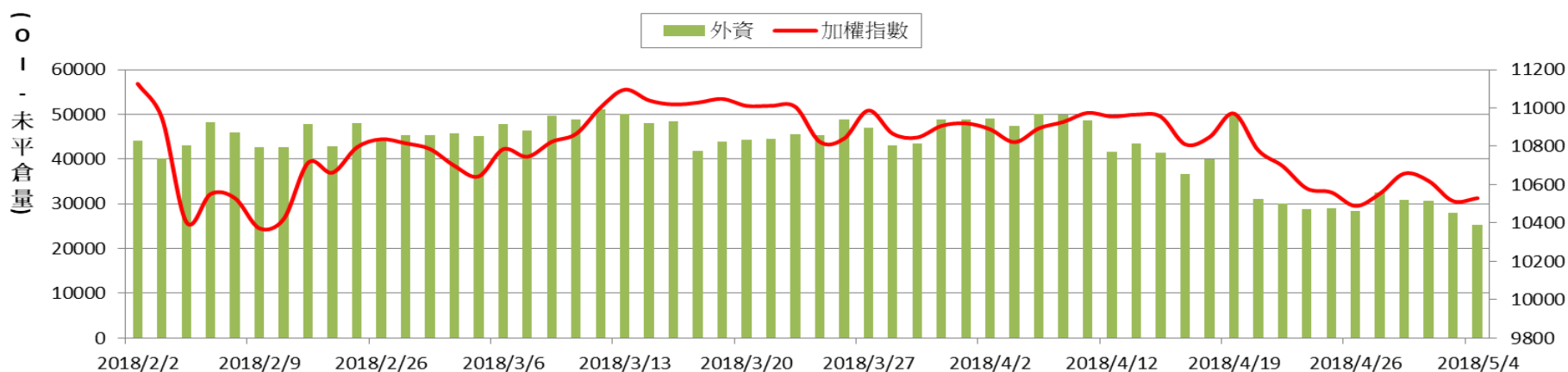
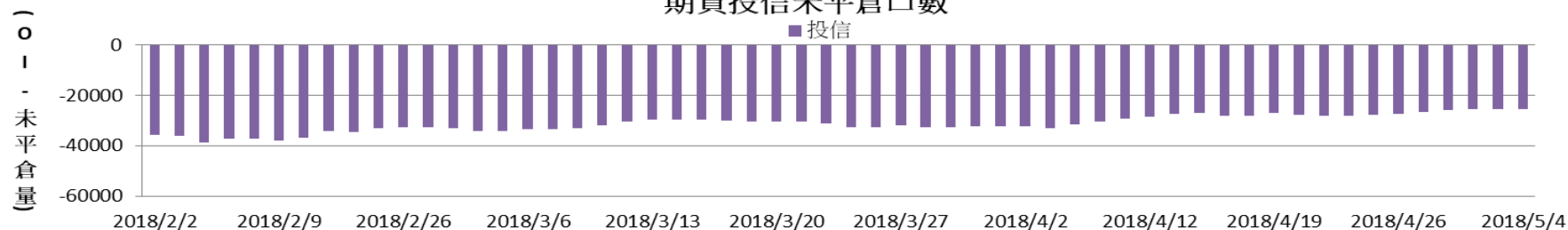


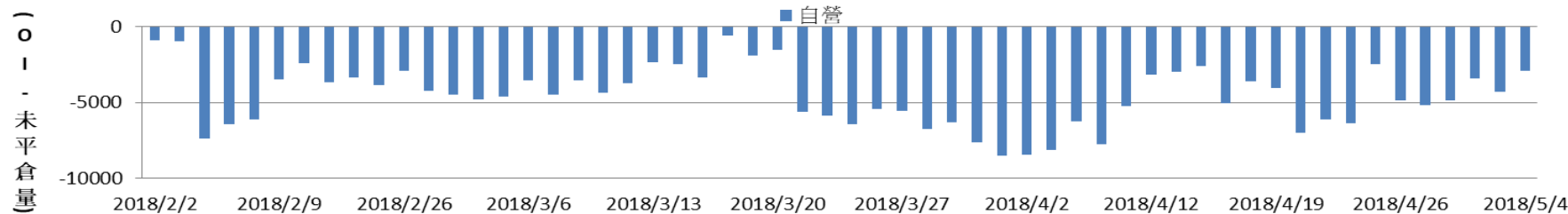
期貨外資未平倉口數 v.s 加權指數



期貨投信未平倉口數

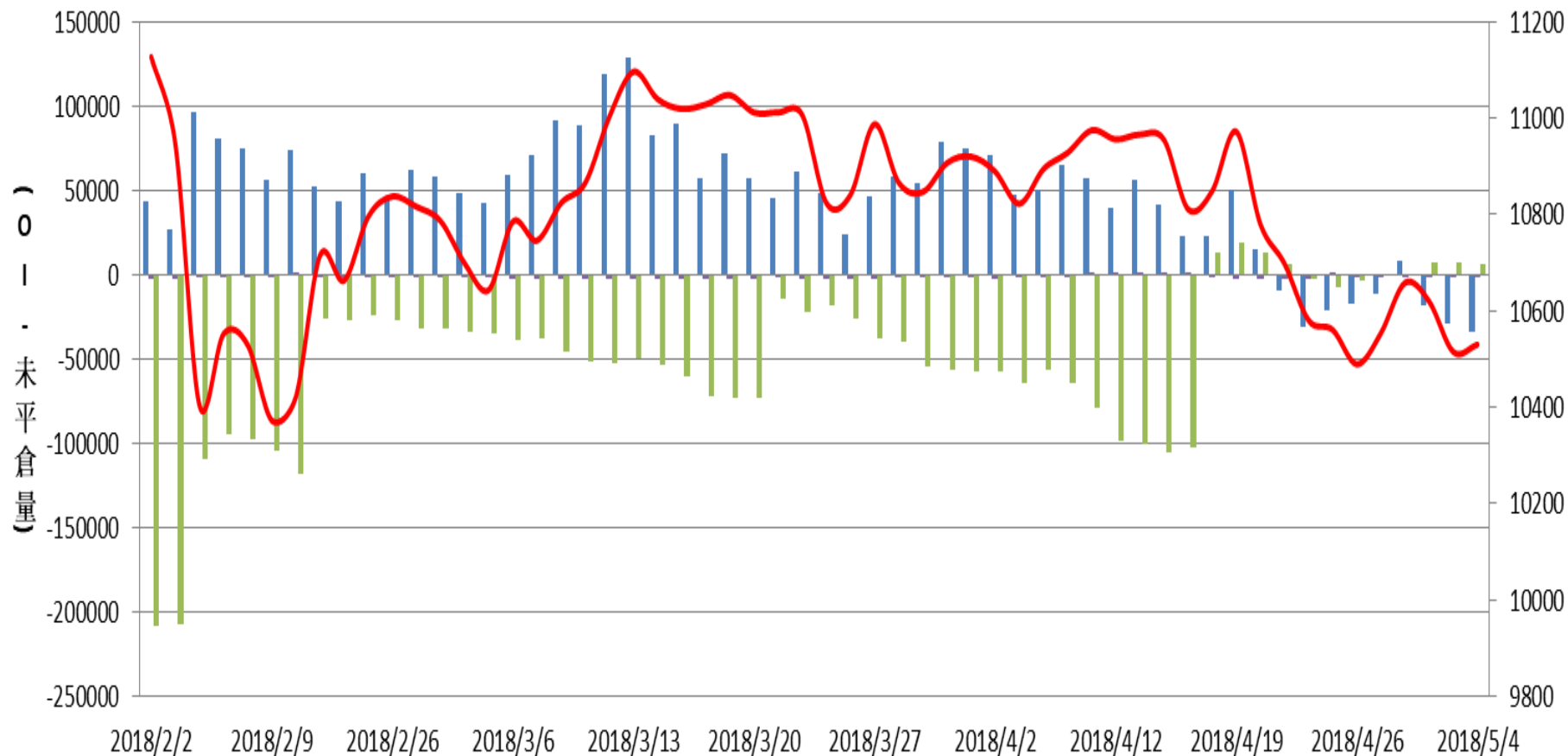


期貨自營未平倉口數



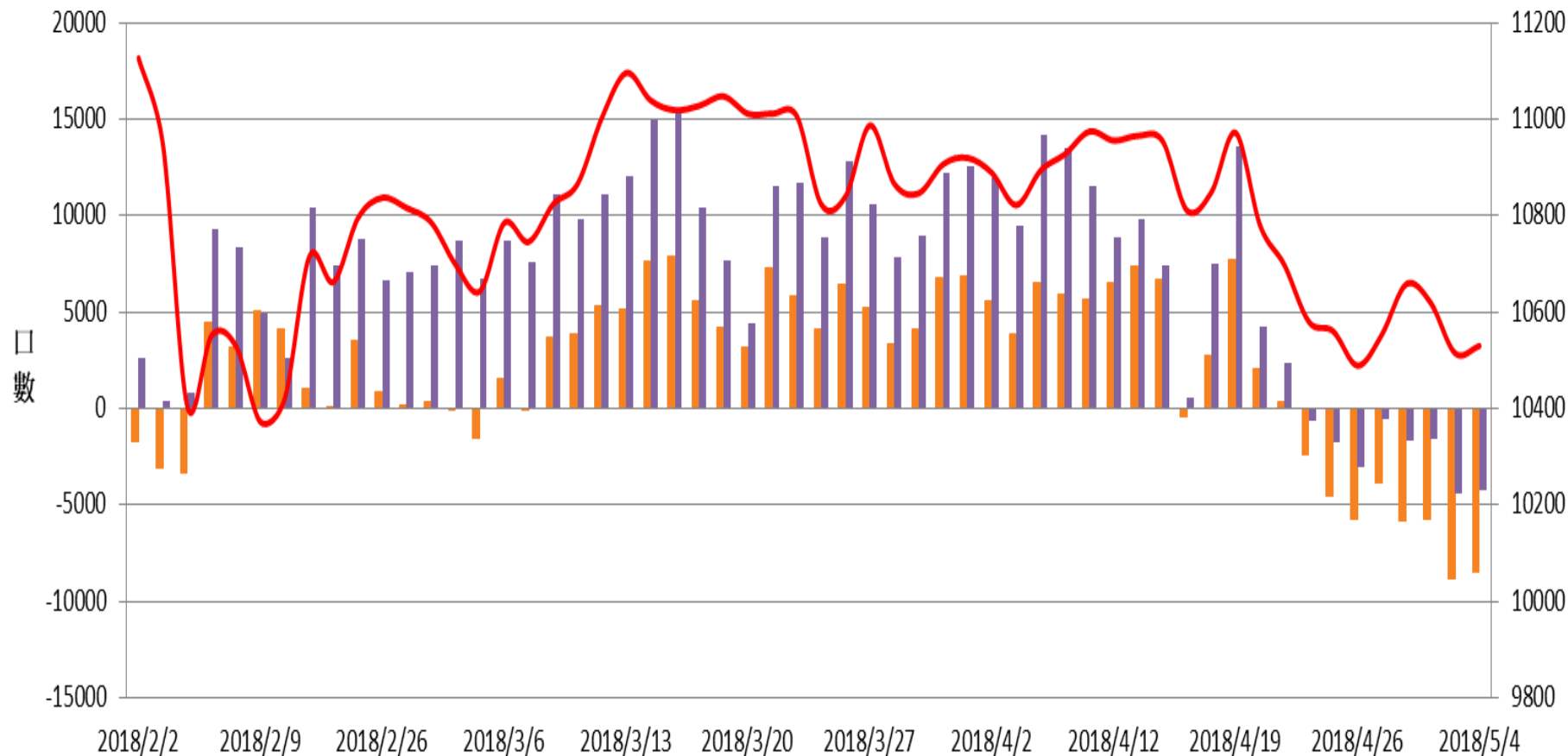
選擇權三大法人未平倉口數V.S 加權指數

■ 自營 ■ 投信 ■ 外資 — 加權指數



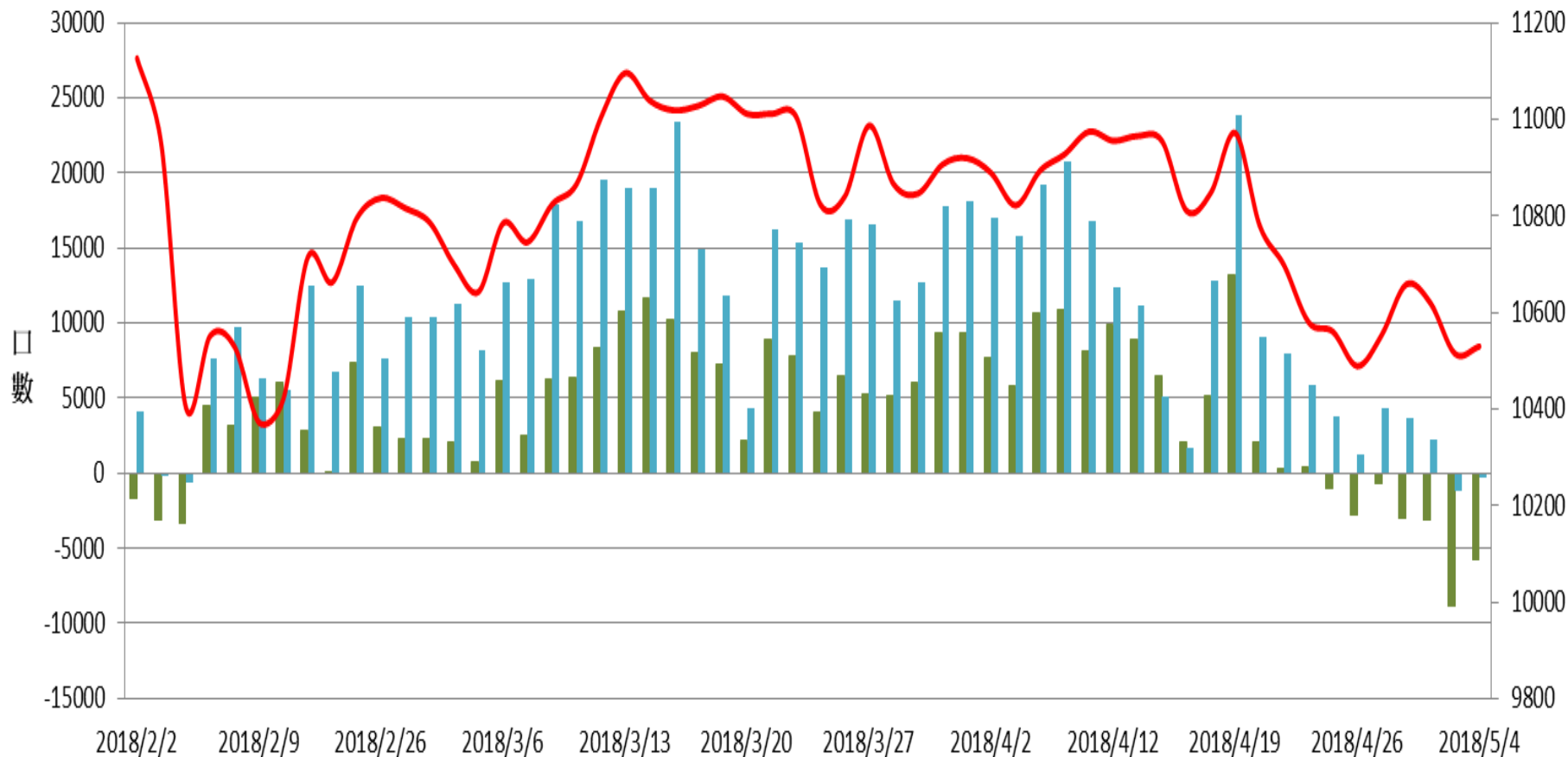
加權指數v.s期貨大額法人未平倉口數

前五大 前十大 加權指數



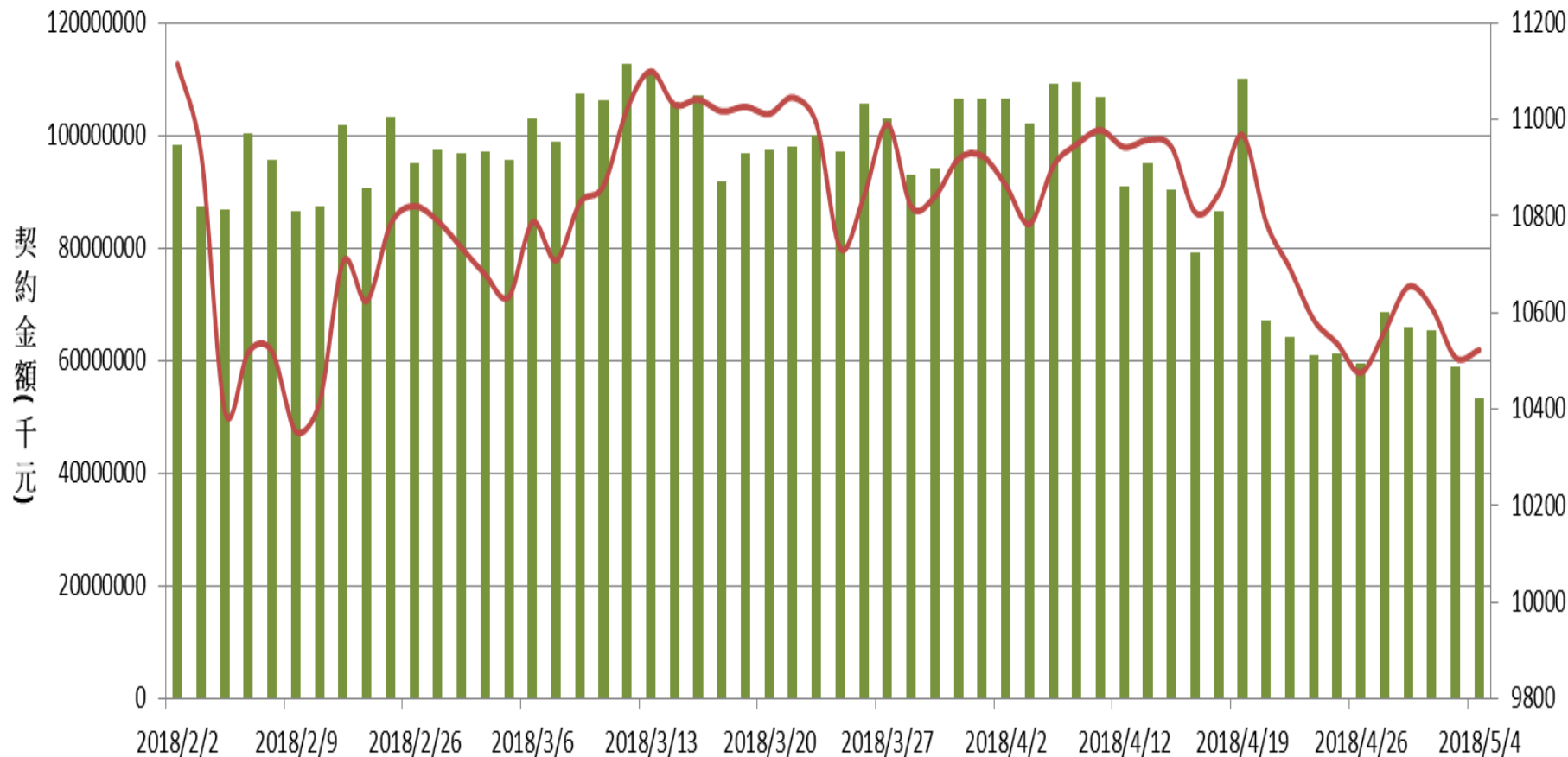
加權指數v.s期貨特定法人未平倉口數

■前五特 ■前十特 —加權指數

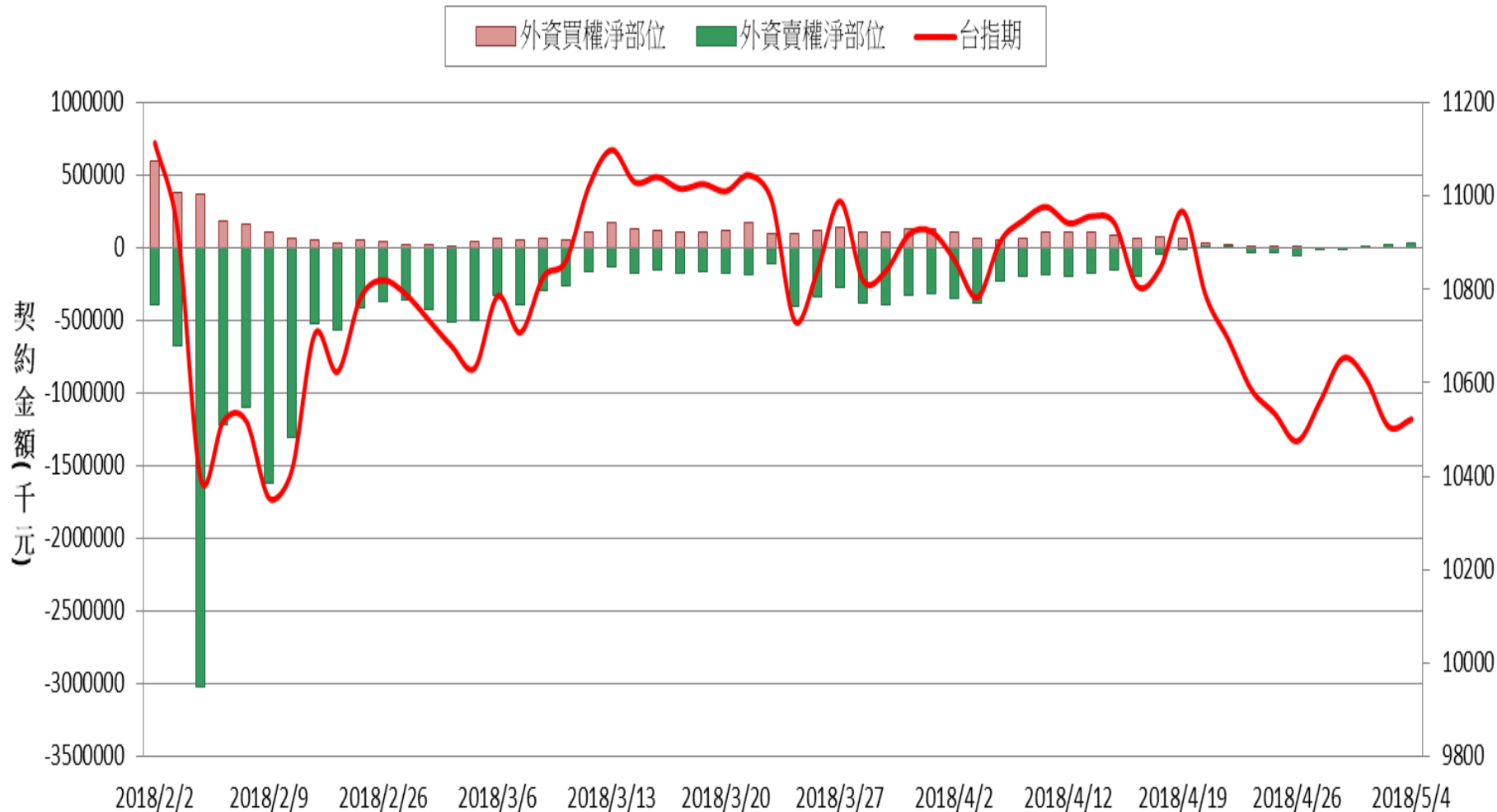


外資台指期與選擇權淨部位契約金額V.S台指期

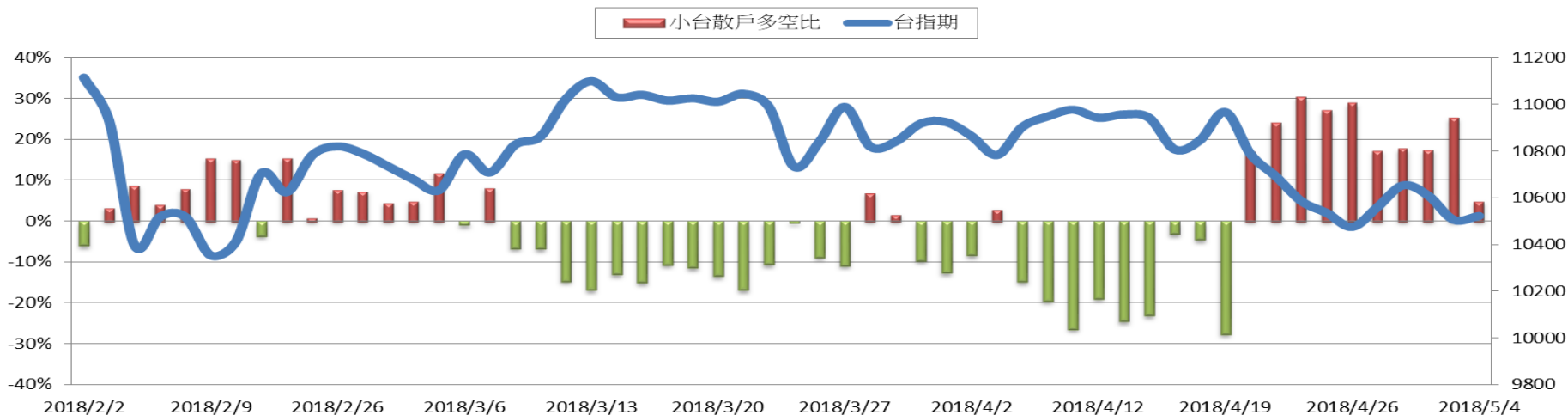
■ 外資淨部位(千元) — 台指期



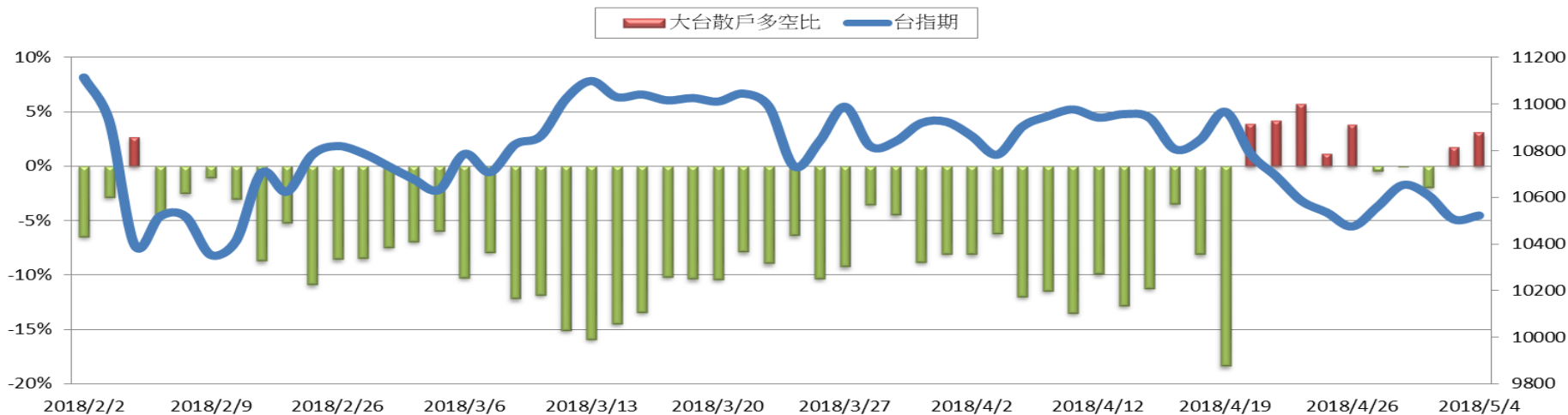
外資買賣權淨部位契約金額V.S台指期



台指期與小台散戶多空比(%)



台指期與大台散戶多空比(%)



		買 權		201805	賣 權		
Vol	OI變化	OI	履約價	OI	OI變化	Vol	
17	(+17)	17	8900		2796 (+57)	143	
0	0	0	9000		6674 (-3)	157	
0	0	1	9100		2876 (+12)	51	
0	0	1	9200		3323 (+36)	46	
0	0	22	9300		2121 (+267)	620	
0	0	6	9400		3518 (+31)	621	
0	0	18	9500		3602 (-225)	2015	
0	0	128	9600		2882 (-4)	932	
0	0	103	9700		3702 (+420)	1582	
0	0	52	9800		9391 (+357)	1809	
4	(+3)	16	9900		9926 (+1794)	5716	
103	(+5)	168	10000		18901 (+604)	5385	
51	(+5)	319	10100		11629 (+469)	6081	
279	(+23)	408	10200		14439 (+941)	11539	
819	(+221)	902	10300		20473 (+243)	15123	
2961	(+792)	3194	10400		18224 (-1155)	14802	
10141	(+1178)	7301	10500		15947 (-302)	14496	
15914	(+1410)	10726	10600		13365 (-365)	5880	
22398	(+2420)	20399	10700		8835 (-532)	2388	
17062	(+1887)	29562	10800		13727 (-559)	1718	
5192	(+377)	22464	10900		3722 (-35)	420	
3696	(-553)	26363	11000		1749 (-63)	259	
1759	(-353)	19941	11100		900 (-9)	25	
462	(-185)	11157	11200		160 (-8)	8	
461	(-160)	9848	11300		76 (-1)	1	
343	(-107)	7025	11400		120 0	0	
252	(-98)	8959	11500		31 0	0	
134	(-101)	5474	11600		13 0	0	
167	(+121)	2604	11700		0 0	0	
11	(+11)	2534	11800		8 0	0	
3	0	2725	11900		10 (+6)	6	
0	0	956	12000		3 0	0	
0	0	313	12100		0 0	0	
0	0	313	12200		0 0	0	
0	0	612	12300		1 0	0	
0	0	117	12400		1 0	0	
0	0	343	12500		1 0	0	
3	0	424	12600		7 (+3)	6	
4	(+4)	287	12700		10 (+6)	6	
10	(+10)	695	12800		3 0	0	